



# VW-20

## 3-Pieces Forged Check Valve Up to 160 bar (2300 PSI)

Tecval **VW-20** 3-Pieces Check Valve is a Forged design. Due to its 3-Pieces design allows easy and safe assembly. Better than others on the market. The forged connections result a mechanical stronger and more durable product, especially suitable for working in high corrosive environment. They are manufactured in several sizes, connections and alloys, always under ASME B16.34.



### Features

- Unique design between forged Flanges.
- Three pieces to allow a full disassembling.
- No maintenance required.
- Easy installation in any position.
- 100% tested.

### Options

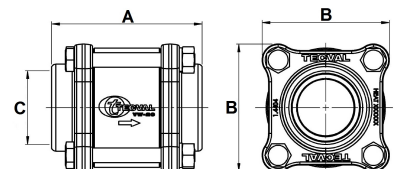
- VIC Grooved end connections. **O**
- FPM seats. **VI**
- NEOPREN seats. **N**
- NBR seats. **B**

### Technical data

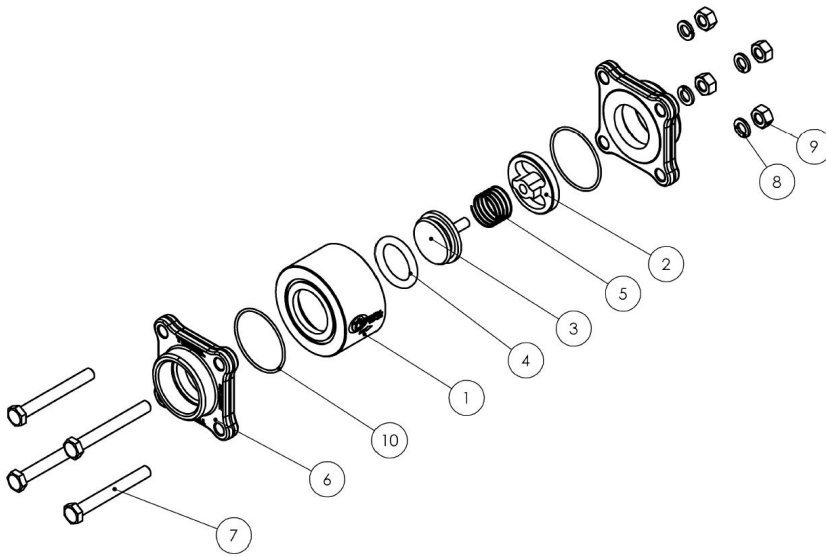
|               |   |      |      |        |        |     |
|---------------|---|------|------|--------|--------|-----|
| Max. Pressure | Up to 160 bar (2300 PSI)  |      |      |        |        |     |
| Obert. Press  | Horizontal flow direction: 20 mbar (0,3 PSI) Flow going down: 10 mbar (0,15 PSI) / Flow rising: please consult. |      |      |        |        |     |
| Temperatures  | -20°C/200°C (-4°F/392°F)  |      |      |        |        |     |
| Dimensions    | 1/2"  | 3/4" | 1"   | 1 1/4" | 1 1/2" | 2"  |
| A             | 60  | 92.5 | 92.5 | -      | 125    | 125 |
| B             | 44  | 68.5 | 68.5 | -      | 106    | 106 |
| C             | 22  | 27   | 30   | -      | 50     | 56  |

### Order codes

|     |      |      |      |      |      |      |
|-----|------|------|------|------|------|------|
| BSP | 2711 | 2715 | 2721 | 2741 | 2745 | 2751 |
| SW  | 2713 | 2717 | 2723 | 2743 | 2747 | 2753 |
| BW  | 2714 | 2718 | 2724 | 2744 | 2748 | 2754 |
| NPT | 2712 | 2716 | 2722 | 2742 | 2746 | 2752 |



\* Dimensions in mm



## Materials

| Nº Part          | AISI-316L <b>AA</b>          | SuperDuplex <b>AS</b>        |
|------------------|------------------------------|------------------------------|
| 1 Body           | AISI-316L (1.4404)           | Superduplex (1.4410/ 1.4501) |
| 2 Bonnet         | AISI-316L (1.4404)           | Superduplex (1.4410/ 1.4501) |
| 3 Stem           | AISI-316L (1.4404)           | Superduplex (1.4410/ 1.4501) |
| 4 Seat           | EPDM                         | EPDM                         |
| 5 Spring         | Superduplex (1.4410/ 1.4501) | Superduplex (1.4410/ 1.4501) |
| 6 End connection | AISI-316 (1.4401)            | Superduplex (1.4410/ 1.4501) |
| 7 Screw          | AISI-316L (1.4404)           | AISI-316L (1.4404)           |
| 8 Grower Washer  | AISI-316L (1.4404)           | AISI-316L (1.4404)           |
| 9 Nut            | AISI-316L (1.4404)           | AISI-316L (1.4404)           |
| 10 O-ring        | EPDM                         | EPDM                         |

## Special alloys

Among the wide range of alloys existing, TECVAL has selected this considered by our customers as most suitable, which we stock to ensure a quick and effective supply. Whether you do not find the required alloy or need further information about our special alloys valves and fittings, please address your inquiry to our Technical Department.

## Ordering information

References are formed by three parts:

**Valve Code** Look for it in the order codes chart on the previous page.

**Option/s** If required, add the code/s from the options section on the previous page (in alphabetical order).

**Material** Look for the code on the materials chart.

Example: Check Valve VW-20 1"NPT Superduplex:

**2722 AS** The reference required to place the order is **2722AS** .

## Tests

100% tested in accordance to API STANDARD 598, each valve is tested to check the leakage in the seats. Upon request, the corresponding materials and test certificates can be delivered with the valve.

## Packaging

All TECVAL valves are supplied packed in individual polyethylene airtight bags. End screw connections are protected with polyethylene caps. Everything is 100% recyclable.

## Elastomers & Seats

Seat (position 4) and O-ring (position 10) can be made of different materials: Nitrile **B** , FPM **VI** or Neopren **N** , considering the working conditions. Likewise the seats can be made in other materials upon request.



TECVAL S.L.  
C/Berlín, 1 Nave 4  
Pol.Can Torrella  
08233-VACARISSES  
Barcelona - SPAIN  
Tel: +34 938 280 055  
tecval@tecval.es