



VB-12F

2-Pieces Forged Ball Valve

Working Pressures: 100 bar (1500 PSI)

TECVAL **VB-12F** 2-Pieces Ball Valve is designed with a **Forged Body** that reduces the surface porosity and closes up internal cavities. Resulting in a mechanical stronger and more durable product specially in high corrosive environments.



Features

- Compact design with forged body.
- Full bore.
- Panel Nut.
- No ejectable stem design.
- No maintenance required.
- Anti-leak stem with double o-ring seal.
- 100% tested.

Options

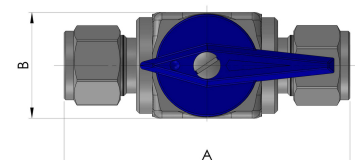
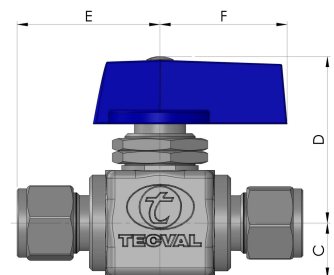
- Automation through electrical actuator.
- Automation through pneumatic actuator.
- Prepared for a quick automation. **T**
- Degreased for oxygen service. **D**
- O-ring seals Nitrile. **B**
- O-ring seals FPM. **VI**
- O-ring seals Neopren. **N**

Technical data

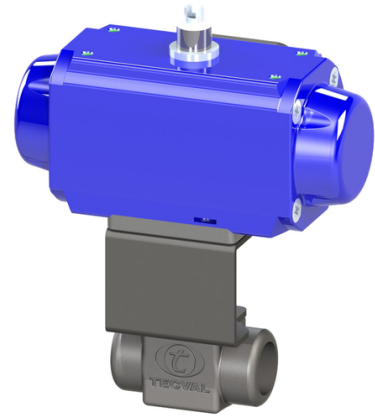
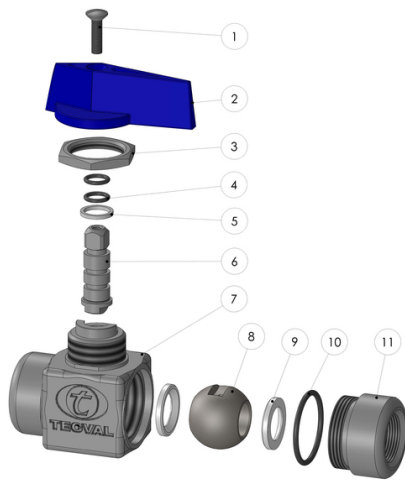
Max. Pressure	100 bar (1500 PSI) at 38°C (100°F)										
Temperatures	-20°C/200°C (-4°F/392°F)										
Dimensions	1/4"	3/8"	1/2"	1/4"	3/8"	1/2"	3/4"	6mm	8mm	10mm	12mm
Connection	THRD	THRD	THRD	O.D.	O.D.	O.D.	O.D.	O.D.	O.D.	O.D.	O.D.
A	50	50	62	74	74	90	90	74	74	74	90
B	26	26	33	26	26	33	33	26	26	26	33
C	14	14	17	14	14	17	17	14	14	14	17
D	45	45	52	45	45	52	52	45	45	45	52
E	25	25	31	37	37	45	45	37	37	37	45
F	30	30	40	30	30	40	40	30	30	30	40
Orifice Size	8	8	13	5	7,5	10,3	13	5	6	7	10,5
Maximum Cv	4	4	11	1,5	4	7,5	13,5	1,2	2,5	3,5	8

Order codes

BSP(ISO 228-1)	6031	6051	6071	-	-	-	-	-	-	-	-
NPT(ANSI B1.20.1)	6032	6052	6072	-	-	-	-	-	-	-	-
TecvaLOK	-	-	-	6039	6059	6079	6089	6919	6939	6959	6989



* Dimensions in mm



Materials

Nº	Part	AISI-316L A4	SuperDuplex AS
1	Handle screw	AISI-316 (1.4401)	AISI-316 (1.4401)
2	Handle	Blue polyamid	Blue polyamid
3	Panel nut	AISI-316L (1.4404)	AISI-316L (1.4404)
4	Stem o-ring	EPDM	EPDM
5	Stem bearing	Delrin	Delrin
6	Stem	AISI-316L (1.4404)	Superduplex (1.4410/ 1.4501)
7	Body	AISI-316L (1.4404)	Superduplex (1.4410/ 1.4501)
8	Ball	AISI-316L (1.4404)	Superduplex (1.4410/ 1.4501)
9	Seat	P.T.F.E.	P.T.F.E.
10	O-ring	EPDM	EPDM
11	End connection	AISI-316L (1.4404)	Superduplex (1.4410/ 1.4501)

Special alloys

We can manufacture in different materials:

BRASS (2.0402) **LA** , AISI-904L (1.4539) **A9** , 254-SMO (1.4547) **AV** , Alloy 400 (2.4360) **MO** , Alloy 625 (2.4856) **IN** , Alloy 825 (2.4858) **CO** , Titanio Gr.2 (3.7034) **TI** , Hastelloy C-276 (2.4819) **HA**

Please address your inquiry to our Technical Department.

Ordering information

References are formed by three parts:

Valve Code Look for it in the order codes chart on the previous page.

Option/s If required, add the code/s from the options section on the previous page (in alphabetical order).

Material Look for the code on the materials chart.

Example:

Ball valve VB-12F 1/2" NPT Superduplex:

6072 AS The reference required to place the order is **6072AS** .

Actuators

Upon request, ball valves VB-12F can be delivered with:

- Pneumatic actuators: either double acting (DA) or spring return (SR).

- Electrical actuators: of 24V, 115V and 230V can also be assembled.

Tests

100% tested in accordance to API STANDARD 598, each valve is tested to check the leakage in the seats and packing. Upon request, the corresponding materials and test certificates can be delivered with the valve.

Maintenance

Valves with long no-working period may have a harder initial operating torque. Designed to be operated in a fully open or fully closed position.

Elastomers & Seats

O-ring seals can be made of different materials: Nitrile **B**, FPM **VI** or Neopren **N**, considering the working conditions and fluid of the valve.



TECVAL S.L.
C/Berlín, 1 Nave 4
Pol.Can Torrella
08233-VACARISSES
Barcelona - SPAIN
Tel: +34 938 280 055
tecval@tecval.es