



# MBT-2.3DT

## 2-Way 3-Valve Transmitter Direct Coupling Manifold

**Working Pressures: 100 | 420 bar (1500 | 6000 PSI)**

TECVAL MBT-2.3DT manifolds are designed to work with fluids under high pressure and/or high temperature service. Their distribution diagram consists of three valves commanding three lines: high pressure, low pressure and a by-pass line to restart the instrument. The coupling is manufactured according to EN 61518. Four screws 7/16" UNF and two PTFE joints to assemble the transmitter are supplied.



### Features

- High-strength forged body.
- Metal-to-metal shut-off.
- PTFE packing.
- 100% tested.

### Options

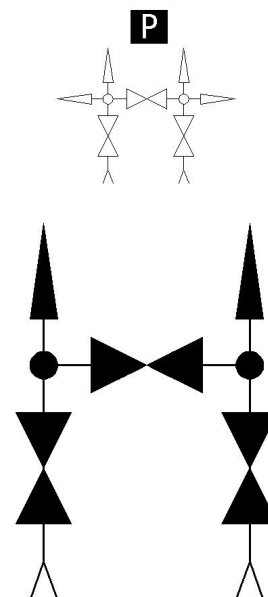
- Movable stem tip. **F**
- Grafoil packing for high temperatures. **G**
- Four screws M10 instead of 7/16" UNF. **Z**
- Two bleed screws in outflow. **P**
- Flange x Flange. **B**
- High working pressure 420 bar (6000 PSI). **I**

### Technical data

|               |   |               |
|---------------|---|---------------|
| Max. Pressure | Standard pressure: 100 bar (1500 PSI) High pressure: 420 bar (6000 PSI) |               |
| Temperatures  | -20°C/400°C (-4°F/752°F)  |               |
| Dimensions    | 1/2"  | FlangexFlange |
| A Opened      | 92  | 92            |
| A Closed      | 85  | 85            |
| B Opened      | 122   | 122           |
| B Closed      | 115   | 115           |
| C             | 80  | 72            |
| D             | 41  | 41            |
| E             | 54  | 54            |
| F             | 7/16"UNF  | 7/16"UNF      |
| G             | 54  | 54            |
| Orifice Size  | 4   | 4             |

### Order codes

|     |      |      |
|-----|------|------|
| NPT | 3150 | -    |
| BSP | 3151 | -    |
| SW  | 3152 | -    |
|     | -    | 3200 |



\* Dimensions in mm

## Materials

| Nº Part     | AISI-316L <b>A4</b> | Duplex <b>AD</b>     | SuperDuplex <b>AS</b>       | Special alloys     |
|-------------|---------------------|----------------------|-----------------------------|--------------------|
| 1 Set screw | AISI-304 (1.4301)   | AISI-304 (1.4301)    | AISI-304 (1.4301)           | AISI-304 (1.4301)  |
| 2 Handle    | AISI-316L (1.4404)  | AISI-316L (1.4404)   | AISI-316L (1.4404)          | AISI-316L (1.4404) |
| 3 Nut       | AISI-316L (1.4404)  | AISI-316L (1.4404)   | AISI-316L (1.4404)          | AISI-316L (1.4404) |
| 4 Bonnet    | AISI-316L (1.4404)  | Duplex (1.4462)      | Superduplex (1.4410/1.4501) | Special alloy      |
| 5 Gland     | AISI-316L (1.4404)  | AISI-316 (DIN1.4401) | AISI-316L (1.4404)          | AISI-316L (1.4404) |
| 6 Packing   | P.T.F.E.            | P.T.F.E.             | P.T.F.E.                    | P.T.F.E.           |
| 7 Stem      | AISI-316L (1.4404)  | Duplex (1.4462)      | Superduplex (1.4410/1.4501) | Special alloy      |
| 8 Body      | AISI-316L (1.4404)  | Duplex (1.4462)      | Superduplex (1.4410/1.4501) | Special alloy      |
| 9 Screw     | AISI-316L (1.4404)  | AISI-316L (1.4404)   | AISI-316L (1.4404)          | AISI-316L (1.4404) |
| 10 Joint    | P.T.F.E.            | P.T.F.E.             | P.T.F.E.                    | P.T.F.E.           |

## Special alloys

Among the wide range of alloys existing, TECVAL has selected those considered by our customers as most suitable, which we stock to ensure a quick and effective supply. Whether you do not find the required alloy or need further information about our exotic alloys valves and fittings, please address your inquiry to our Technical Department.

AISI-316Ti (1.4571) **A6**

AISI-904L (1.4539) **A9**

254-SMO (1.4547) **AV**

Alloy 400 (2.4360) **MO**

Alloy 625 (2.4856) **IN**

Alloy 825 (2.4858) **CO**

Titanium Gr.2 (3.7034) **TI**

Hastelloy C-276 (2.4819) **HA**

## Ordering information

References are formed by three parts:

### Manifold Code

Look for it in the order codes chart on the previous page.

### Option/s

-If required, add the code/s from the options section on the previous page (in alphabetical order)

### Material

-Look for the code on the materials chart.

An example of manifold and two options:

Manifold MBT-2.3 DT 1/2"NPT 254-SMO with movable stem tip and two bleed valves in outflow:

**3150 FP AV** The reference to place the order is **3150FPAV**.

## Tests

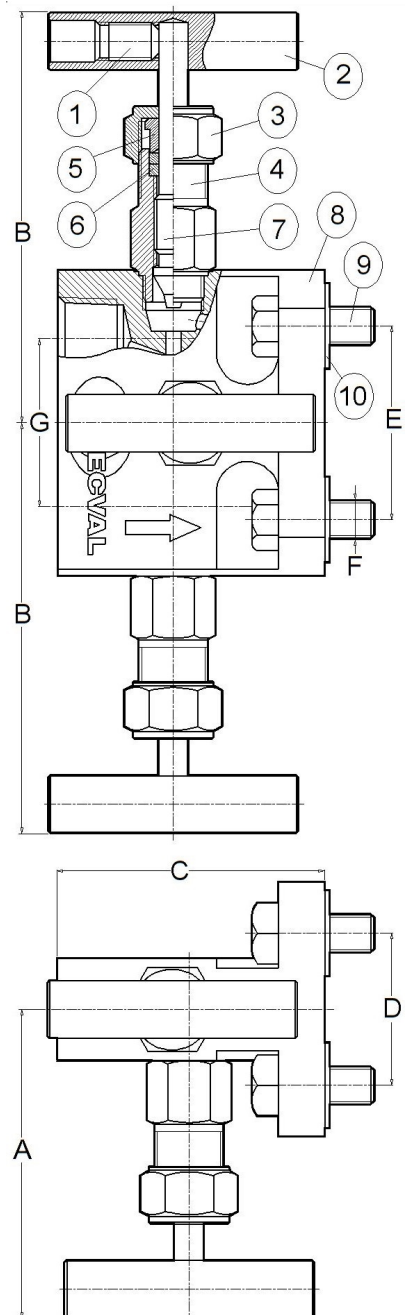
According to API STANDARD 598, each manifold is tested to check the leakage in the seat and packing. Under request, the corresponding materials and test certificates can be delivered with the manifold.

## Packaging

All TECVAL manifolds are supplied packed in individual polyethylene airtight bags. End screw connections are protected with polyethylene caps. Everything is 100% recyclable.

## Maintenance

Adjustment of the packings may be necessary during the working life of the manifold. The operation consists of turning the nuts (3) clockwise. Manifolds with long no-working period may have a harder initial operating torque.



TECVAl S.L.  
C/Berlín, 1 Nave 4  
Pol.Can Torrella  
08233-VACARISSES  
Barcelona - SPAIN  
Tel: +34 938 280 055  
tecval@tecval.es