



MBT-2.3

2-Way 3-Valve Manifold

Working Pressures: 100 | 420 bar (1500 | 6000 PSI)

TECVAL MBT-2.3 manifolds are designed to work with fluids under high pressure and/or high temperature service. Their distribution diagram consists of three valves commanding three lines: high pressure, low pressure and a by-pass line to restart the instrument.



Features

- Metal-to-metal shut-off.
- Easy packing external adjustment.
- PTFE packing.
- Two mounting holes.
- 100% tested.

Options

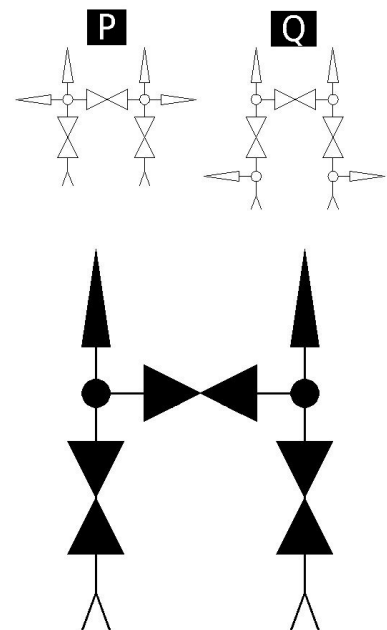
- Movable stem tip. **F**
- Grafoil packing for high temperatures. **G**
- Two outflow bleed screws. **P**
- Two inflow bleed screws. **Q**
- High working pressure 420 bar (6000 PSI) **I**

Technical data

Max. Pressure	Standard pressure: 100 bar (1500 PSI) High pressure: 420 bar (6000 PSI)	
Temperatures	-20°C/400°C (-4°F/752°F)	
Dimensions	1/2"	
	A Open	92
	A Closed	85
	B Open	122
	B Closed	115
	C	60
	D	30
	E	22
	F	6.5
	G	54
Orifice Size	4	

Order codes

	NPT	3100
	BSP	3101
	SW	3102



* Dimensions in mm

Materials

Nº Part	AISI-316L A4	Duplex AD	SuperDuplex AS	Special alloys
1 Set screw	AISI-304 (1.4301)	AISI-304 (1.4301)	AISI-304 (1.4301)	AISI-304 (1.4301)
2 Handle	AISI-316L (1.4404)	AISI-316L (1.4404)	AISI-316L (1.4404)	AISI-316L (1.4404)
3 Nut	AISI-316L (1.4404)	AISI-316L (1.4404)	AISI-316L (1.4404)	AISI-316L (1.4404)
4 Bonnet	AISI-316L (1.4404)	Duplex (1.4462)	Superduplex (1.4410/1.4501)	Special alloy
5 Gland	AISI-316L (1.4404)	AISI-316L (1.4404)	AISI-316L (1.4404)	AISI-316L (1.4404)
6 Packing	P.T.F.E.	P.T.F.E.	P.T.F.E.	P.T.F.E.
7 Stem	AISI-316L (1.4404)	Duplex (1.4462)	Superduplex (1.4410/1.4501)	Special alloy
8 Body	AISI-316L (1.4404)	Duplex (1.4462)	Superduplex (1.4410/1.4501)	Special alloy

Special alloys

Among the wide range of alloys existing, TECVAL has selected those considered by our customers as most suitable, which we stock to ensure a quick and effective supply. Whether you do not find the required alloy or need further information about our exotic alloys valves and fittings, please address your inquiry to our Technical Department.

AISI-316Ti (1.4571) **A6**
 AISI-904L (1.4539) **A9**
 254-SMO (1.4547) **AV**
 Alloy 400 (2.4360) **MO**
 Alloy 625 (2.4856) **IN**
 Alloy 825 (2.4858) **CO**
 Titanium Gr.2 (3.7034) **TI**
 Hastelloy C-276 (2.4819) **HA**

Ordering information

References are formed by three parts:

Manifold Code

Look for it in the order codes chart on the previous page.

Option/s

-If required, add the code/s from the options section on the previous page (in alphabetical order)

Material

-Look for the code on the materials chart.

An example of manifold and two options:

Manifold MBT-2.3 1/2"NPT AISI-316L with movable stem tip and two outflow bleed screws of :

3100 FP A4 The reference to place the order is **3100FPA4**.

Tests

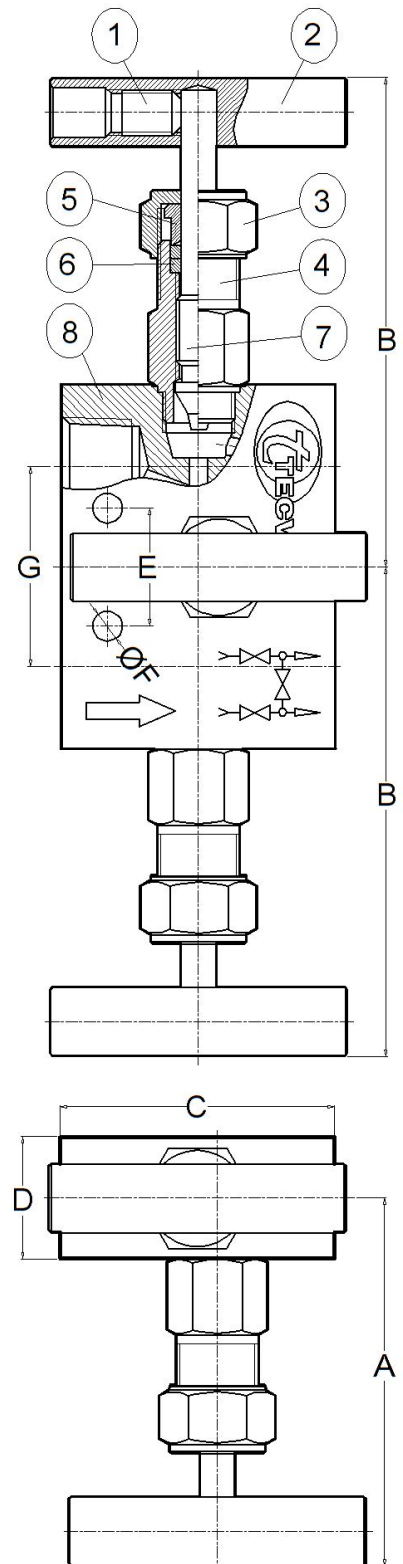
According to API STANDARD 598, each manifold is tested to check the leakage in the seat and packing. Under request, the corresponding materials and test certificates can be delivered with the manifold.

Packaging

All TECVAL manifold are supplied packed in individual polyethylene airtight bags. End screw connections are protected with polyethylene caps. Everything is 100% recyclable.

Maintenance

Adjustment of the packings may be necessary during the working life of the manifold. The operation consists of turning the nuts (3) clockwise. Manifolds with long no-working period may have a harder initial operating torque.



TECVAL S.L.
 C/Berlin, 1 Nave 4
 Pol.Can Torrella
 08233-VACARISSES
 Barcelona - SPAIN
 Tel: +34 938 280 055
 tecval@tecval.es