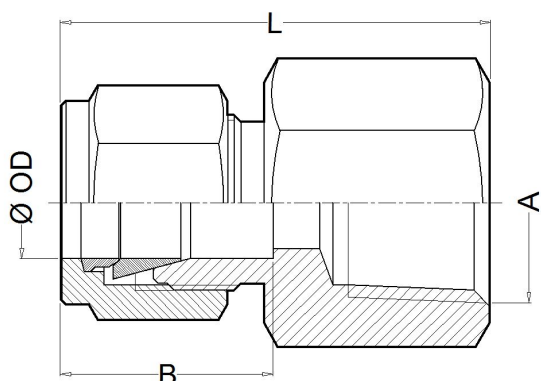




CHR

Threaded Female Connector (NPT & BSP-P)

The CHR two-ferrule compressing fittings are used to assemble a threaded end to a metric or fractional tube. The resulting union is completely hermetic, both for high pressure and high temperatures.



Features

- Easy and fast mounting.
- Resistant to vibration.
- Hard fastening and union without twisting.
- Anti-leakage guarantee.
- Metric tube from 6mm to 12mm.
- Fractional tube from 1/4" to 3/4".
- Threaded NPT ends according to ANSI B1.20.1.
- Threaded BSP-P ends according to ISO 7/1 & EN 10226-1.

Technical data

Ø OD	A	Code NPT	Code BSP-P	B (mm)	L (mm)
6	1/4"	80409	80509	16	36
6	1/2"	80411	80511	16	43
1/4"	1/4"	80412	80512	16	36
1/4"	1/2"	80414	80514	16	43
8	1/4"	80417	80517	17	33
3/8"	1/4"	80419	80519	17	39
3/8"	1/2"	80421	80521	17	33
10	1/4"	80422	80522	17	38

Ø OD	A	Code NPT	Code BSP-P	B (mm)	L (mm)
10	1/2"	80424	80524	17	44
12	1/4"	80425	80525	23	40
12	1/2"	80427	80527	23	46
1/2"	1/4"	80429	80529	23	40
1/2"	1/2"	80431	80531	23	46
3/4"	1/2"	80441	80541	24	47
3/4"	3/4"	80442	80542	24	48

Materials

SuperDuplex (1.4410 / 1.4501) **AS**

AISI-904L (1.4539) **A9**

Ordering information

The fittings references are formed in two parts:

Fitting Code Look for it in the technical data.

Material Code Look for it in the materials list.

Example: Threaded Female Connector CHR 1/2"OD x 1/4"NPT Superduplex will be: **80425 AS**.

The reference required to place the order is **80425AS**.

Packaging

All TECVAL fittings are supplied packed in individual polyethylene airtight bags. Everything is 100% recyclable.



TECVAL S.L.
C/Berlin, 1 Nave 4
Pol.Can Torrella
08233-VACARISSES
Barcelona - SPAIN
Tel: +34 938 280 055
tecval@tecval.es