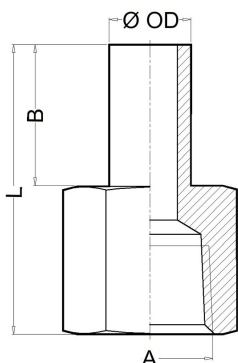




# CHE

## Adapter Tube Connection to (NPT & BSP-P)

The CME Adapter is used to connect easily two pipes or components with two-ferrule compression connection in one site and threaded connection in the other site.



### Features

- Easy and fast mounting.
- Resistant to vibration.
- Hard fastening and union without twisting.
- Anti-leakage guarantee.
- Metric tube from 6mm to 12mm.
- Fractional tube from 1/4" to 3/4".
- Threaded NPT ends according to ANSI B1.20.1.
- Threaded BSP-P ends according to ISO 7/1 & EN 10226-1.

### Technical data

A	OD	Code NPT	Code BSP-P	L (mm)	B (mm)
1/4"	6	87307	87407	35	16
1/4"	1/4"	87311	87411	35	16
1/4"	8	87315	87415	35	17
1/4"	3/8"	87319	87419	35	17
1/2"	3/8"	87321	87421	42	17
1/4"	10	87323	87423	35	17

A	OD	Code NPT	Code BSP-P	L (mm)	B (mm)
1/2"	10	87325	87425	42	17
1/2"	12	87328	87428	48	23
1/4"	1/2"	87329	87429	41	23
1/2"	1/2"	87331	87431	48	23
1/2"	3/4"	87341	87441	49	24
3/4"	3/4"	87342	87442	51	24

### Materials

SuperDuplex (1.4410 / 1.4501) **AS**

AISI-904L (1.4539) **A9**

### Ordering information

The fittings references are formed in two parts:

**Fitting Code** Look for it in the technical data.

**Material Code** Look for it in the materials list.

Example: Threaded Male Connector CMR 1/4"OD x 1/4"NPT Superduplex will be: **80012 AS**.

The reference required to place the order is **80012A4**.

### Packaging

All TECVAL fittings are supplied packed in individual polyethylene airtight bags. Everything is 100% recyclable.



TECVAL S.L.  
C/Berlin, 1 Nave 4  
Pol.Can Torrella  
08233-VACARISSES  
Barcelona - SPAIN  
Tel: +34 938 280 055  
tecval@tecval.es