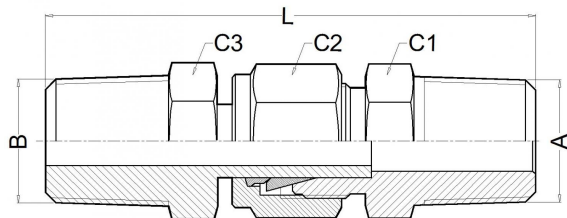




# ADF

## Coupling for Manifold Up to 420 bar (6000 PSI)

TECVAL ADF couplings for manifold are suitable for a quick and effective connection of the manifold to different devices: differential manometers, pressure transmitters, etc...



### Features

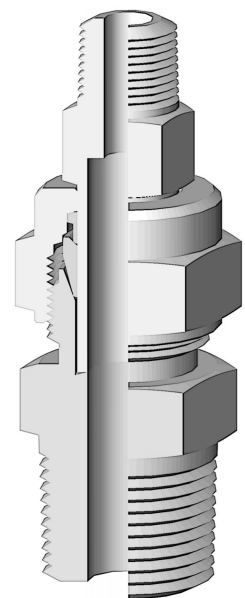
- Quick and easy assembly.
- Sealing guarantee.
- Space reduction.
- Strong anchoring.
- Low cost.

### Technical data

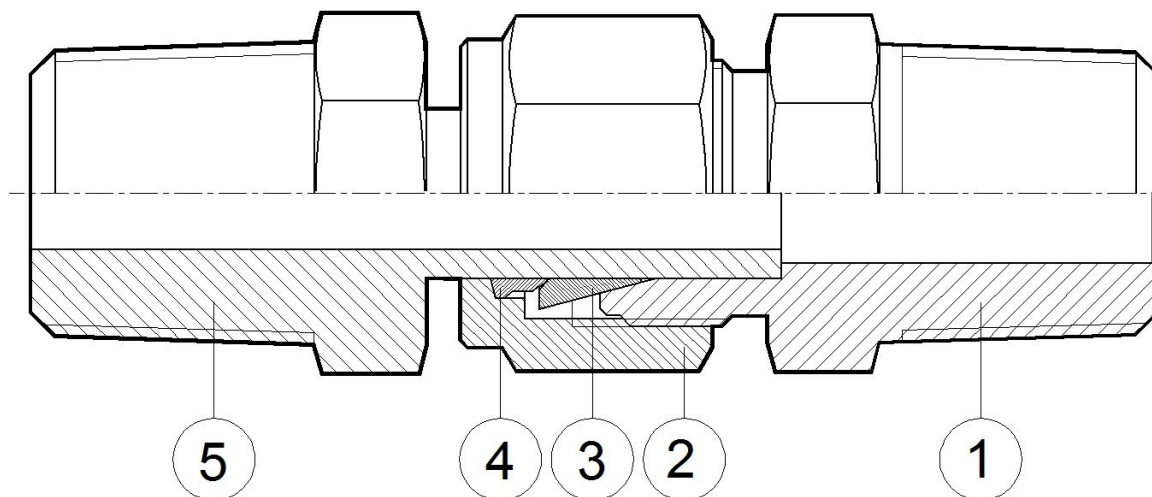
Max. Pressure	Up to 420 bar (6000 PSI)		
Temperatures	-20°C/400°C (-4°F/752°F)		
Dimensions	1/4"x1/4"	1/2"x1/4"	1/2"x1/2"
L	68	73	80
A	1/4"	1/2"	1/2"
B	1/4"	1/4"	1/2"
C1	22	22	22
C2	22	22	22
C3	14	14	22
Orifice Size	6.5	8	8

### Order codes

NPT	3002	3000	3001
-----	------	------	------



\* Dimensions in mm



## Materials

Nº	Part	AISI-316L <b>A4</b>	Duplex <b>AD</b>	SuperDuplex <b>AS</b>	Special alloys
1	Body	AISI-316L (1.4404)	Duplex (1.4462)	Superduplex (1.4410/1.4501)	Special alloy
2	Nut	AISI-316L (1.4404)	Duplex (1.4462)	Superduplex (1.4410/1.4501)	Special alloy
3	Front ring	AISI-316L (1.4404)	Duplex (1.4462)	Superduplex (1.4410/1.4501)	Special alloy
4	Back ring	AISI-316L (1.4404)	Duplex (1.4462)	Superduplex (1.4410/1.4501)	Special alloy
5	Male end	AISI-316L (1.4404)	Duplex (1.4462)	Superduplex (1.4410/1.4501)	Special alloy

## Special alloys

Among the wide range of alloys existing, TECVAL has selected those considered by our customers as most suitable, which we stock to ensure a quick and effective supply: AISI-316Ti (1.4571) **A6**, AISI-904L (1.4539) **A9**, Alloy 400 (2.4360) **MO**, Alloy 625 (2.4856) **IN**, Alloy 825 (2.4858) **CO**, 254-SMO (1.4547) **AV**, Titanium Gr.2 (3.7034) **TI**, Hastelloy C-276 (2.4819) **HA**. Whether you do not find the required alloy or need further information about our special alloys valves and fittings, please address your inquiry to our Technical Department.

## Ordering information

References are formed by three parts:

### Valve Code

Look for it in the order codes chart on the previous page.

### Option/s

-If required, add the code/s from the options page (in alphabetical order)

### Material

-Look for the code on the materials chart.

## Packaging

All TECVAL ADF couplings are supplied packed in polyethylene airtight bags. Everything is 100% recyclable.

An example to place order correctly:

Coupling ADF 1/2" x 1/4" AISI-316L:

**3000 A4** The reference to place the order is **3000A4**.

## Assembly procedure

This component is designed to ease the assembly of the manifold to the differential manometer or transmitter (54mm; 2 1/8" distance between connections). First, thread the male end (5) to the transmitter inlet, and thread the sets of male end 1/2" NPT, rings and nut to the manifold outlets. Then, bring face to face and insert the ends into the nuts. Check both parts are parallel. Finally, tighten the nut manually, fasten the body of the connector with a spanner, and with another spanner tighten the nut again 1 turn and 1/4. This will result in a perfectly sealed and safe connection between the manifold and the differential transmitter.



TECVAL S.L.  
C/Berlin, 1 Nave 4  
Pol.Can Torrella  
08233-VACARISSES  
Barcelona - SPAIN  
Tel: +34 938 280 055  
tecval@tecval.es