

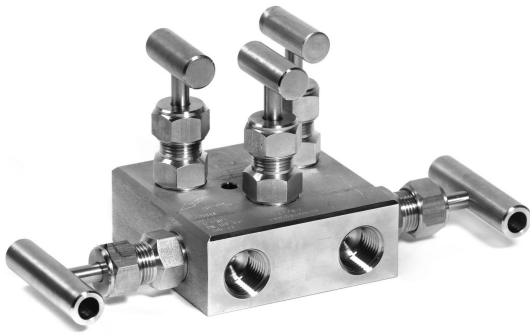


MB-2.5

2-Way 5-Valve Manifold

Working Pressures: 100 | 420 bar (1500 | 6000 PSI)

TECVAL MB-2.5 manifolds are designed to work with fluids under high pressure and/or high temperature service. You can select among three different distribution diagrams where five valves command two pressure lines, a by-pass and two purge lines.



Features

- Metal-to-metal shut-off.
- Easy packing external adjustment.
- PTFE packing.
- 100% tested.

Options

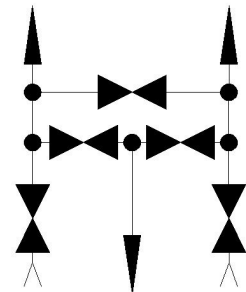
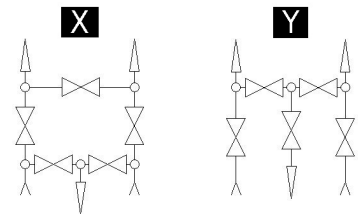
- Movable stem tip. **F**
- Grafoil packing for high temperatures. **G**
- Diagram 2. **X**
- Diagram 3. **Y**
- High working pressure 420 bar (6000 PSI) **I**

Technical data

Max. Pressure	Standard pressure: 100 bar (1500 PSI) High pressure: 420 bar (6000 PSI)	
Temperatures	-20°C/400°C (-4°F/752°F)	
Dimensions	1/2"	
	A Open	102
	A Closed	95
	B Open	127
	B Closed	120
	C	90
	D	54
Orifice Size	4	

Order codes

	NPT	3250
	BSP	3251
	SW	3252



* Dimensions in mm

Materials

Nº Part	AISI-316L A4	Duplex AD	SuperDuplex AS	Special alloys
1 Set screw	AISI-304 (1.4301)	AISI-304 (1.4301)	AISI-304 (1.4301)	AISI-304 (1.4301)
2 Handle	AISI-316L (1.4404)	AISI-316L (1.4404)	AISI-316L (1.4404)	AISI-316L (1.4404)
3 Nut	AISI-316L (1.4404)	AISI-316L (1.4404)	AISI-316L (1.4404)	AISI-316L (1.4404)
4 Bonnet	AISI-316L (1.4404)	Duplex (1.4462)	Superduplex (1.4410/1.4501)	Special alloy
5 Gland	AISI-316L (1.4404)	AISI-316L (1.4404)	AISI-316L (1.4404)	AISI-316L (1.4404)
6 Packing	P.T.F.E.	P.T.F.E.	P.T.F.E.	P.T.F.E.
7 Stem	AISI-316L (1.4404)	Duplex (1.4462)	Superduplex (1.4410/1.4501)	Special alloy
8 Body	AISI-316L (1.4404)	Duplex (1.4462)	Superduplex (1.4410/1.4501)	Special alloy

Special alloys

Among the wide range of alloys existing, TECVAL has selected those considered by our customers as most suitable, which we stock to ensure a quick and effective supply. Whether you do not find the required alloy or need further information about our exotic alloys valves and fittings, please address your inquiry to our Technical Department.

AISI-316Ti (1.4571) **A6**

AISI-904L (1.4539) **A9**

254-SMO (1.4547) **AV**

Alloy 400 (2.4360) **MO**

Alloy 625 (2.4856) **IN**

Alloy 825 (2.4858) **CO**

Titanium Gr.2 (3.7034) **TI**

Hastelloy C-276 (2.4819) **HA**

Ordering information

References are formed by three parts:

Manifold Code

Look for it in the order codes chart on the previous page.

Option/s

-If required, add the code/s from the options section on the previous page (in alphabetical order)

Material

-Look for the code on the materials chart.

An example of manifold with two options:

Manifold MB-2.5 1/2"NPT AISI-316L with diagram 2 and grafoil packing:

3251 GX A4 The reference to place the order is **3251GXA4**

Tests

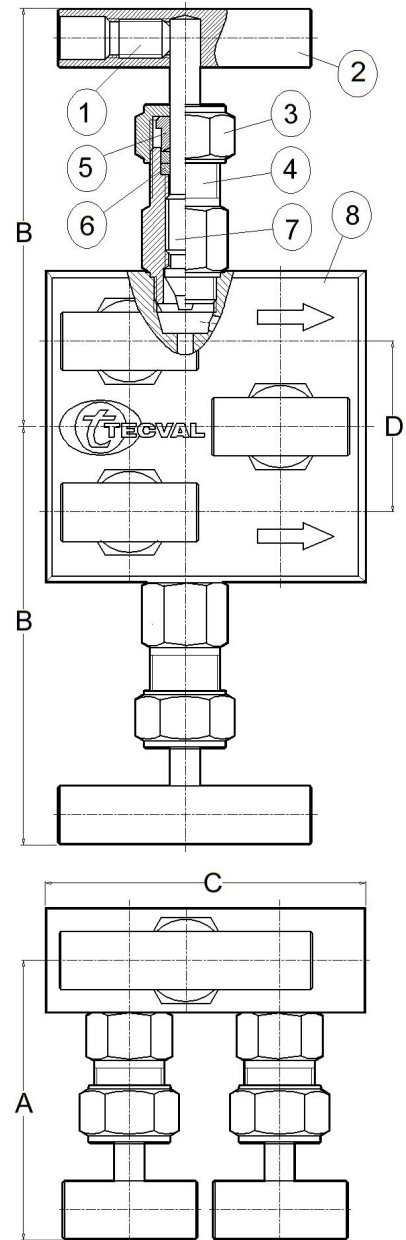
According to API STANDARD 598, each manifold is tested to check the leakage in the seat and packing. Under request, the corresponding materials and test certificates can be delivered with the manifold.

Packaging

All TECVAL manifolds are supplied packed in individual polyethylene airtight bags, which include the general features of the manifold. End screw connections are protected with polyethylene caps. Everything is 100% recyclable.

Maintenance

Adjustment of the packings may be necessary during the working life of the manifold. The operation consists of turning the nuts (3) clockwise. Manifolds with long no-working period may have a harder initial operating torque.



TECVAL S.L.
C/Berlín, 1 Nave 4
Pol.Can Torrella
08233-VACARISSES
Barcelona - SPAIN
Tel: +34 938 280 055
tecval@tecval.es