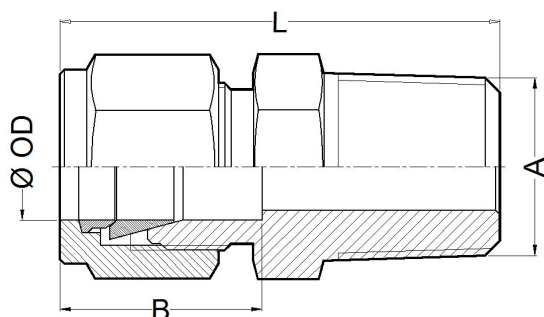




# CMR

## Threaded Male Connector (NPT & BSP) or Buttweld (BW)

The CMR two-ferrule compressing fittings are used to assemble a threaded or welding end to a metric or fractional tube. The resulting union is completely hermetic, both for high pressure and high temperatures.



### Features

- Easy and fast mounting.
- Resistant to vibration.
- Hard fastening and union without twisting.
- Anti-leakage guarantee.
- Metric tube from 4mm to 25mm.
- Fractional tube from 1/8" to 1".
- Threaded NPT ends according to ANSI B1.20.1.
- Threaded BSP ends according to DIN ISO 228-1.
- Buttweld BW ends according to ANSI B16.25.

### Technical data

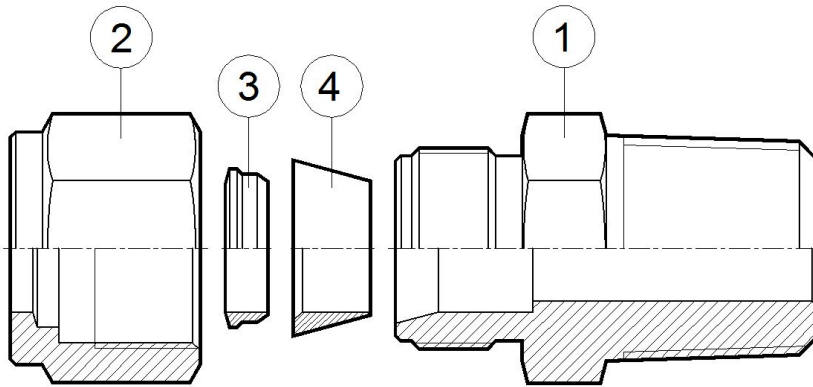
Ø OD	A	Code NPT	Code BSP	Code BW	B (mm)	L (mm)
1/8"	1/8"	80000	80100	80200	13	30
1/8"	1/4"	80001	80101	80201	13	35
1/8"	3/8"	80002	80102	80202	13	36
4	1/8"	80003	80103	80203	14	31
4	1/4"	80004	80104	80204	14	36
4	3/8"	80005	80105	80205	14	37
3/16"	1/8"	80006	80106	80206	14	31
3/16"	1/4"	80007	80107	80207	14	36
3/16"	3/8"	80008	80108	80208	14	37
6	1/4"	80009	80109	80209	16	38
6	3/8"	80010	80110	80210	16	39
6	1/2"	80011	80111	80211	16	44
1/4"	1/4"	80012	80112	80212	16	38
1/4"	3/8"	80013	80113	80213	16	39
1/4"	1/2"	80014	80114	80214	16	44
5/16"	1/4"	80015	80115	80215	17	39
5/16"	3/8"	80016	80116	80216	17	39
8	1/4"	80017	80117	80217	17	39
8	3/8"	80018	80118	80218	17	39
3/8"	1/4"	80019	80119	80219	17	40
3/8"	3/8"	80020	80120	80220	17	41

Ø OD	A	Code NPT	Code BSP	Code BW	B (mm)	L (mm)
3/8"	1/2"	80021	80121	80221	17	45
10	1/4"	80022	80122	80222	17	41
10	3/8"	80023	80123	80223	17	42
10	1/2"	80024	80124	80224	17	45
12	1/4"	80025	80125	80225	23	43
12	3/8"	80026	80126	80226	23	44
12	1/2"	80027	80127	80227	23	47
12	3/4"	80028	80128	80228	23	50
1/2"	1/4"	80029	80129	80229	23	43
1/2"	3/8"	80030	80130	80230	23	44
1/2"	1/2"	80031	80131	80231	23	47
1/2"	3/4"	80032	80132	80232	23	50
5/8"	3/8"	80033	80133	80233	24	44
5/8"	1/2"	80034	80134	80234	24	48
16	3/8"	80035	80135	80235	24	44
16	1/2"	80036	80136	80236	24	48
18	3/8"	80037	80137	80237	24	46
18	1/2"	80038	80138	80238	24	49
18	3/4"	80039	80139	80239	24	50
3/4"	3/8"	80040	80140	80240	24	46
3/4"	1/2"	80041	80141	80241	24	49

## Technical data

Ø OD	A	Code NPT	Code BSP	Code BW	B (mm)	L (mm)
3/4"	3/4"	80042	80142	80242	24	50
3/4"	1"	80043	80143	80243	24	56
20	3/8"	80044	80144	80244	26	47
20	1/2"	80045	80145	80245	26	51
20	3/4"	80046	80146	80246	26	52
20	1"	80047	80147	80247	26	57
22	1/2"	80048	80148	80248	26	51

Ø OD	A	Code NPT	Code BSP	Code BW	B (mm)	L (mm)
22	3/4"	80049	80149	80249	26	52
7/8"	1/2"	80050	80150	80250	26	51
7/8"	3/4"	80051	80151	80251	26	52
25	3/4"	80052	80152	80252	31	58
25	1"	80053	80153	80253	31	62
1"	3/4"	80054	80154	80254	31	58
1"	1"	80055	80155	80255	31	62

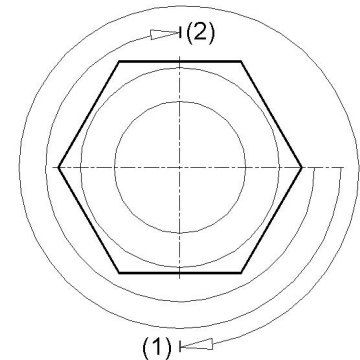


## Packaging

All TECVAL fittings are supplied packed in individual polyethylene airtight bags. Everything is 100% recyclable.

## Assembly process

Insert the tube to the bottom of the end connector, and tight the nut manually. Then, fasten the body of the connector with a spanner, and with another spanner tight the nut 1 turn and 1/4 (1). For tube of 1/8 and 4mm just tight 3/4 turn (2). The result is a hard fastening, no leakage union without twisting and safe from the connector to the tube.



## Materials

Nº Part	AISI-316L <b>A4</b>	Duplex <b>AD</b>	SuperDuplex <b>AS</b>	Special alloys
1 Body	AISI-316L (1.4404)	Duplex (1.4462)	Superduplex (1.4410/1.4501)	Special alloy
2 Nut	AISI-316L (1.4404)	Duplex (1.4462)	Superduplex (1.4410/1.4501)	Special alloy
3 Back ferrule	AISI-316L (1.4404)	Duplex (1.4462)	Superduplex (1.4410/1.4501)	Special alloy
4 Front ferrule	AISI-316L (1.4404)	Duplex (1.4462)	Superduplex (1.4410/1.4501)	Special alloy

## Special alloys

Among the wide range of alloys existing, TECVAL has selected those considered by our customers as most suitable, which we stock to ensure a quick and effective supply: AISI-316Ti (1.4571) **A6**, AISI-904L (1.4539) **A9**, Alloy 400 (2.4360) **MO**, Alloy 625 (2.4856) **IN**, Alloy 825 (2.4858) **CO**, 254-SMO (1.4547) **AV**, Titanium Gr.2 (3.7034) **TI**, Hastelloy C-276 (2.4819) **HA**. Whether you do not find the required alloy or need further information about our exotic alloys valves and fittings, please address your inquiry to our Technical Department.

## Ordering information

The fittings references are formed in two parts:

**Fitting Code** Look for it in the technical data.

**Material Code** Look for it in the materials list.

Example: Threaded Male Connector CMR 1/2"OD x 3/4"NPT AISI-316L will be: **80032 A4**.

The reference required to place the order is **80032A4**.



TECVAL S.L.  
C/Berlin, 1 Nave 4  
Pol.Can Torrella  
08233-VACARISSES  
Barcelona - SPAIN  
Tel: +34 938 280 055  
tecval@tecval.es