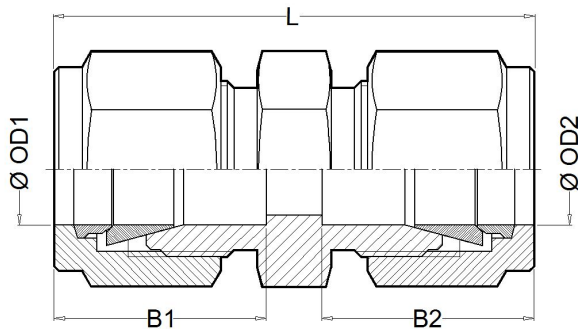




CIR

Tube connector

The CIR two-ferrule compressing fittings are used to join two metric or fractional tubes of the same or different outside diameter without either thread or welding. The resulting union is completely hermetic, both for high pressure and high temperatures.



Features

- Easy and fast mounting.
- Resistant to vibration.
- Hard fastening and union without twisting.
- Anti-leakage guarantee.
- Metric tube from 4mm to 25mm.
- Fractional tube from 1/8" to 1".

Technical data

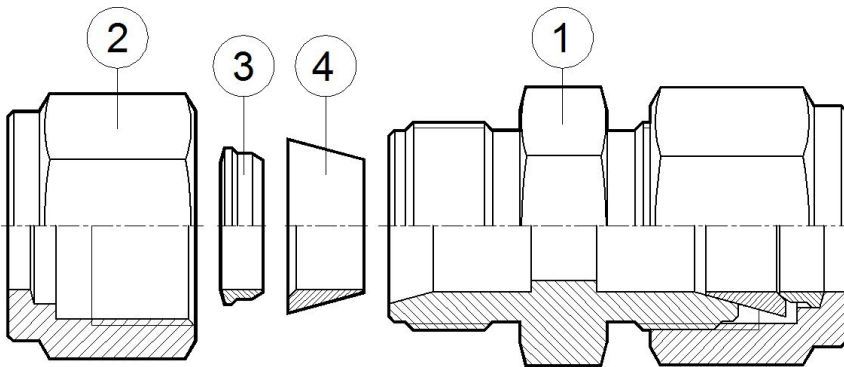
Ø OD1	Ø OD2	Code	B1 (mm)	B2 (mm)	L (mm)
1/8"	1/8"	80800	13	13	36
1/8"	3/16"	80801	13	14	37
1/8"	1/4"	80802	13	16	39
1/8"	3/8"	80803	13	17	42
4	4	80804	14	14	38
4	6	80805	14	16	40
4	10	80806	14	17	43
3/16"	3/16"	80807	14	14	38
3/16"	1/4"	80808	14	16	40
3/16"	5/16"	80809	14	17	41
3/16"	3/8"	80810	14	17	43
6	6	80811	16	16	41
6	8	80812	16	17	43
6	10	80813	16	17	45
6	12	80814	16	22	47
1/4"	1/4"	80815	16	16	41
1/4"	5/16"	80816	16	17	43
1/4"	3/8"	80817	16	17	45
1/4"	1/2"	80818	16	22	47
1/4"	5/8"	80819	16	24	48
5/16"	5/16"	80820	17	17	44
5/16"	3/8"	80821	17	17	45

Ø OD1	Ø OD2	Code	B1 (mm)	B2 (mm)	L (mm)
5/16"	1/2"	80822	17	22	48
8	8	80823	17	17	44
8	10	80824	17	17	46
8	12	80825	17	22	48
8	16	80826	17	24	49
3/8"	3/8"	80827	17	17	46
3/8"	1/2"	80828	17	22	49
3/8"	5/8"	80829	17	24	50
3/8"	3/4"	86730	17	24	51
10	10	80831	17	17	47
10	12	80832	17	22	49
10	16	80833	17	24	50
10	18	80834	17	24	51
10	20	80835	17	26	52
12	12	80836	22	22	51
12	16	80837	22	24	52
12	18	80838	22	24	53
12	20	80839	22	26	54
12	22	80840	22	26	55
12	25	80841	22	32	61
1/2"	1/2"	80842	22	22	51
1/2"	5/8"	80843	22	24	52

Technical data

Ø OD1	Ø OD2	Code	B1 (mm)	B2 (mm)	L (mm)
1/2"	3/4"	80844	22	24	53
1/2"	7/8"	80845	22	26	55
1/2"	1"	80846	22	32	61
5/8"	5/8"	80847	24	24	52
5/8"	3/4"	80848	24	24	53
5/8"	1"	80849	24	32	61
16	16	80850	24	24	52
18	18	80851	24	24	53
3/4"	3/4"	80852	24	24	53
3/4"	7/8"	80853	24	26	55

Ø OD1	Ø OD2	Code	B1 (mm)	B2 (mm)	L (mm)
3/4"	1"	80854	24	32	61
20	20	80855	26	26	55
20	22	80856	26	26	52
20	25	80857	26	32	61
22	22	80858	26	26	55
22	25	80859	26	32	61
7/8"	7/8"	80860	26	26	55
7/8"	1"	80861	26	32	61
25	25	80862	32	32	65
1"	1"	80863	32	32	65

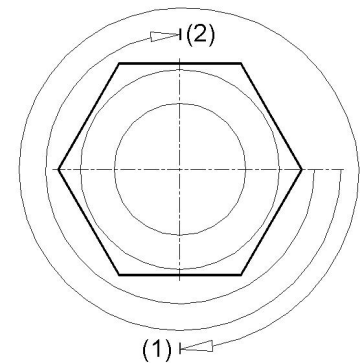


Packaging

All TECVAL fittings are supplied packed in individual polyethylene airtight bags. Everything is 100% recyclable.

Assembly process

Insert the tube to the bottom of the end union, and tight the nut manually. Then, fasten the body of the connector with a spanner, and with another spanner tight the nut 1 turn and 1/4 (1). For tube of 1/8 and 4mm just tight 3/4 turn (2). The result is a hard fastening, no leakage union without twisting and safe from the union to the tube.



Materials

Nº Part	AISI-316L A4	Duplex AD	SuperDuplex AS	Special alloys
1 Body	AISI-316L (1.4404)	Duplex (1.4462)	Superduplex (1.4410/1.4501)	Special alloy
2 Nut	AISI-316L (1.4404)	Duplex (1.4462)	Superduplex (1.4410/1.4501)	Special alloy
3 Back ferrule	AISI-316L (1.4404)	Duplex (1.4462)	Superduplex (1.4410/1.4501)	Special alloy
4 Front ferrule	AISI-316L (1.4404)	Duplex (1.4462)	Superduplex (1.4410/1.4501)	Special alloy

Special alloys

Among the wide range of alloys existing, TECVAL has selected those considered by our customers as most suitable, which we stock to ensure a quick and effective supply: AISI-316Ti (1.4571) **A6**, AISI-904L (1.4539) **A9**, Alloy 400 (2.4360) **MO**, Alloy 625 (2.4856) **IN**, Alloy 825 (2.4858) **CO**, 254-SMO (1.4547) **AV**, Titanium Gr.2 (3.7034) **TI**, Hastelloy C-276 (2.4819) **HA**. Whether you do not find the required alloy or need further information about our special alloys valves and fittings, please address your inquiry to our Technical Department.

Ordering information

The fittings references are formed in two parts:

Fitting Code Look for it in the technical data.

Material Code Look for it in the materials list.

Example: Tube Connector CIR 1/4"OD x 1/2"OD Duplex will be: **80818**

AD.

The reference required to place the order is **80818AD**.



TECVAL S.L.
C/Berlin, 1 Nave 4
Pol.Can Torrella
08233-VACARISSES
Barcelona - SPAIN
Tel: +34 938 280 055
tecval@tecval.es