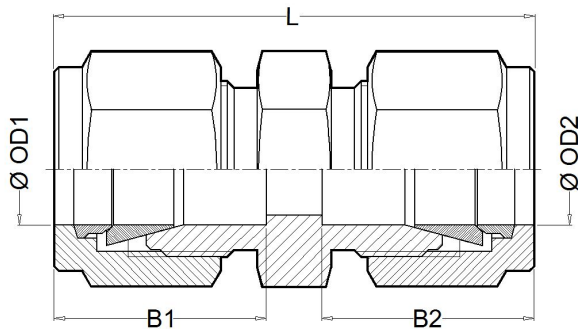




CIR

Tube connector

The CIR two-ferrule compressing fittings are used to join two metric or fractional tubes of the same outside diameter without either thread or welding. The resulting union is completely hermetic, both for high pressure and high temperatures.



Features

- Easy and fast mounting.
- Resistant to vibration.
- Hard fastening and union without twisting.
- Anti-leakage guarantee.
- Metric tube from 6mm to 12mm.
- Fractional tube from 1/4" to 3/4".

Technical data

Ø OD1	Code	B1 (mm)	L (mm)
6	80811	16	41
8	80815	16	41
1/4"	80823	17	44
3/8"	80827	17	46

Ø OD1	Code	B1 (mm)	L (mm)
10	80831	17	47
12	80836	22	51
1/2"	80842	22	51
3/4"	80852	24	53

Materials

SuperDuplex (1.4410 / 1.4501) **AS**

AISI-904L (1.4539) **A9**

Ordering information

The fittings references are formed in two parts:

Fitting Code Look for it in the technical data.

Material Code Look for it in the materials list.

Example: Tube Connector CIR 1/2"OD x 1/2"OD Duplex will be: **80842**

AS.

The reference required to place the order is **80842AD**.

Packaging

All TECVAL fittings are supplied packed in individual polyethylene airtight bags. Everything is 100% recyclable.



TECVAL S.L.
C/Berlin, 1 Nave 4
Pol.Can Torrella
08233-VACARISSES
Barcelona - SPAIN
Tel: +34 938 280 055
tecval@tecval.es