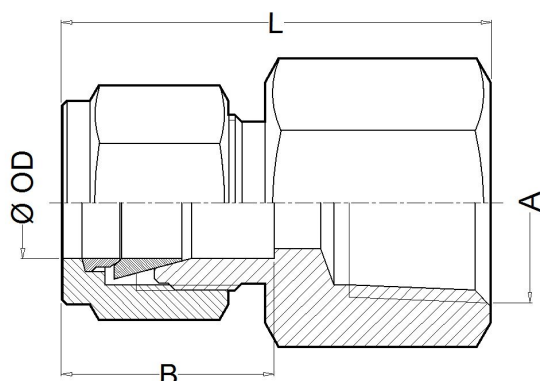


CHR

Threaded Female Connector (NPT & BSP) or Socket Weld (SW)

The CHR two-ferrule compressing fittings are used to assemble a threaded or welding end to a metric or fractional tube. The resulting union is completely hermetic, both for high pressure and high temperatures.



Features

- Easy and fast mounting.
- Resistant to vibration.
- Hard fastening and union without twisting.
- Anti-leakage guarantee.
- Metric tube from 4mm to 25mm.
- Fractional tube from 1/8" to 1".
- Threaded NPT ends according to ANSI B1.20.1.
- Threaded BSP ends according to DIN ISO 228-1.
- Socket Weld SW ends according to ANSI B16.11.

Technical data

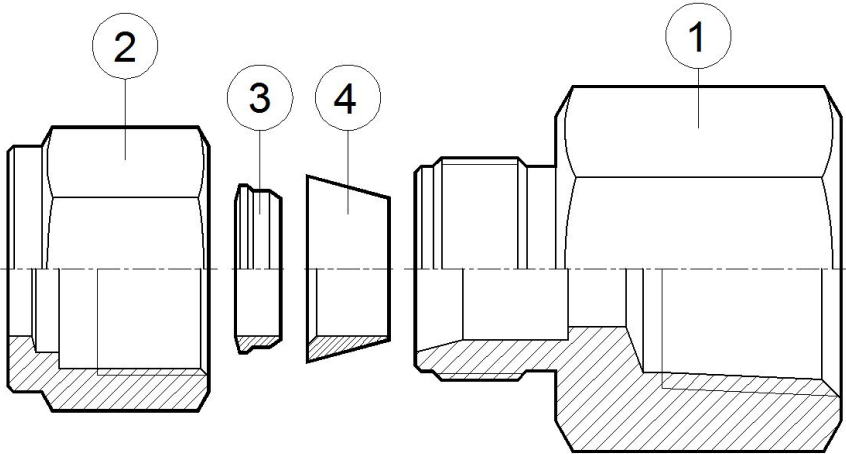
Ø OD	A	Code NPT	Code BSP	Code SW	B (mm)	L (mm)
1/8"	1/8"	80400	80500	80600	13	29
1/8"	1/4"	80401	80501	80601	13	34
1/8"	3/8"	80402	80502	80602	13	35
4	1/8"	80403	80503	80603	14	30
4	1/4"	80404	80504	80604	14	34
4	3/8"	80405	80505	80605	14	36
3/16"	1/8"	80406	80506	80606	14	30
3/16"	1/4"	80407	80507	80607	14	34
3/16"	3/8"	80408	80508	80608	14	36
6	1/4"	80409	80509	80609	16	36
6	3/8"	80410	80510	80610	16	38
6	1/2"	80411	80511	80611	16	43
1/4"	1/4"	80412	80512	80612	16	36
1/4"	3/8"	80413	80513	80613	16	38
1/4"	1/2"	80414	80514	80614	16	43
5/16"	1/4"	80415	80515	80615	17	37
5/16"	3/8"	80416	80516	80616	17	38
8	1/4"	80417	80517	80617	17	33
8	3/8"	80418	80518	80618	17	38
3/8"	1/4"	80419	80519	80619	17	39
3/8"	3/8"	80420	80520	80620	17	44

Ø OD	A	Code NPT	Code BSP	Code SW	B (mm)	L (mm)
3/8"	1/2"	80421	80521	80621	17	33
10	1/4"	80422	80522	80622	17	38
10	3/8"	80423	80523	80623	17	39
10	1/2"	80424	80524	80624	17	44
12	1/4"	80425	80525	80625	23	40
12	3/8"	80426	80526	80626	23	41
12	1/2"	80427	80527	80627	23	46
12	3/4"	80428	80528	80628	23	48
1/2"	1/4"	80429	80529	80629	23	40
1/2"	3/8"	86330	86430	86530	23	41
1/2"	1/2"	80431	80531	80631	23	46
1/2"	3/4"	80432	80532	80632	23	48
5/8"	3/8"	80433	80533	80633	24	42
5/8"	1/2"	80434	80534	80634	24	47
16	3/8"	80435	80535	80635	24	42
16	1/2"	80436	80536	80636	24	47
18	3/8"	80437	80537	80637	24	42
18	1/2"	80438	80538	80638	24	47
18	3/4"	80439	80539	80639	24	48
3/4"	3/8"	80440	80540	80640	24	42
3/4"	1/2"	80441	80541	80641	24	47

Technical data

Ø OD	A	Code NPT	Code BSP	Code SW	B (mm)	L (mm)
3/4"	3/4"	80442	80542	80642	24	48
3/4"	1"	80443	80543	80643	24	57
20	3/8"	80444	80544	80644	26	43
20	1/2"	80445	80545	80645	26	48
20	3/4"	80446	80546	80646	26	49
20	1"	80447	80547	80647	26	57
22	1/2"	80448	80548	80648	26	48

Ø OD	A	Code NPT	Code BSP	Code SW	B (mm)	L (mm)
22	3/4"	80449	80549	80649	26	49
7/8"	1/2"	80450	80550	80650	26	48
7/8"	3/4"	80451	80551	80651	26	49
25	3/4"	80452	80552	80652	31	53
25	1"	80453	80553	80653	31	62
1"	3/4"	80454	80554	80654	31	53
1"	1"	80455	80555	80655	31	62

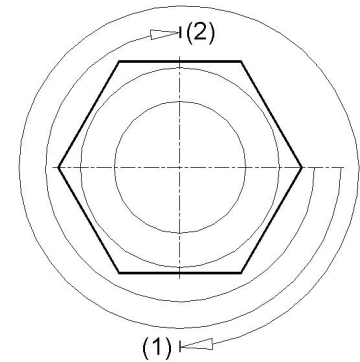


Packaging

All TECVAL fittings are supplied packed in individual polyethylene airtight bags. Everything is 100% recyclable.

Assembly process

Insert the tube to the bottom of the end connector, and tight the nut manually. Then, fasten the body of the connector with a spanner, and with another spanner tight the nut 1 turn and 1/4 (1). For tube of 1/8 and 4mm just tight 3/4 turn (2). The result is a hard fastening, no leakage union without twisting and safe from the connector to the tube.



Materials

Nº Part	AISI-316L A4	Duplex AD	SuperDuplex AS	Special alloys
1 Body	AISI-316L (1.4404)	Duplex (1.4462)	Superduplex (1.4410/1.4501)	Special alloy
2 Nut	AISI-316L (1.4404)	Duplex (1.4462)	Superduplex (1.4410/1.4501)	Special alloy
3 Back ferrule	AISI-316L (1.4404)	Duplex (1.4462)	Superduplex (1.4410/1.4501)	Special alloy
4 Front ferrule	AISI-316L (1.4404)	Duplex (1.4462)	Superduplex (1.4410/1.4501)	Special alloy

Special alloys

Among the wide range of alloys existing, TECVAL has selected those considered by our customers as most suitable, which we stock to ensure a quick and effective supply: AISI-316Ti (1.4571) **A6**, AISI-904L (1.4539) **A9**, Alloy 400 (2.4360) **MO**, Alloy 625 (2.4856) **IN**, Alloy 825 (2.4858) **CO**, 254-SMO (1.4547) **AV**, Titanium Gr.2 (3.7034) **TI**, Hastelloy C-276 (2.4819) **HA**. Whether you do not find the required alloy or need further information about our special alloys valves and fittings, please address your inquiry to our Technical Department.

Ordering information

The fittings references are formed in two parts:

Fitting Code Look for it in the technical data.

Material Code Look for it in the materials list.

Example: Threaded Female Connector CHR 1/2"OD x 3/4"NPT AISI-316L will be: **80432 A4**.

The reference required to place the order is **80432A4**.



TECVAL S.L.
C/Berlin, 1 Nave 4
Pol.Can Torrella
08233-VACARISSES
Barcelona - SPAIN
Tel: +34 938 280 055
tecval@tecval.es