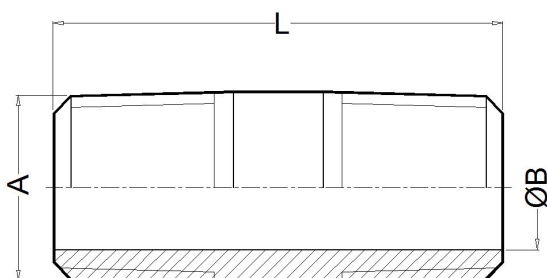




AMM

Nipple

The nipple is used to connect easily two pipes or components with female thread.



Features

- Wide range of sizes and connections.
- Suitable for pipes of different materials.
- Anti-leakage guarantee.
- Threaded NPT ends according to ANSI B1.20.1.
- Threaded BSP ends according to DIN ISO 228-1.
- Max. working pressure according to ASME B31.1.

Technical data

A	ØB (mm)	L (mm)	Max. Pres (bar)	Code NPT	Code BSP
1/8"	4.75	25	517	90000	90050
1/4"	7	35	517	90001	90051
3/8"	9.5	37	448	90002	90052

A	ØB (mm)	L (mm)	Max. Pres (bar)	Code NPT	Code BSP
1/2"	12	45	448	90003	90053
3/4"	16	48	448	90004	90054
1"	21.5	57	414	90005	90055

Materials

Among the wide range of alloys existing, TECVAL has selected those considered by our customers as most suitable, which we stock to ensure a quick and effective supply: AISI-316L (1.4404) **A4**, AISI-316Ti (1.4571) **A6**, AISI-904L (1.4539) **A9**, Duplex (1.4462) **AD**, SuperDuplex (1.4410 / 1.4501) **AS**, 254-SMO (1.4547) **AV**, Alloy 400 (2.4360) **MO**, Alloy 625 (2.4856) **IN**, Alloy 825 (2.4858) **CO**, Titanium Gr.2 (3.7034) **TI**, Hastelloy C-276 (2.4819) **HA**. Whether you do not find the required alloy or need further information about our special alloys valves and fittings, please address your inquiry to our Technical Department.

Ordering information

The fittings references are formed in two parts:

Fitting Code Look for it in the technical data.

Material Code Look for it in the materials list.

Example: Nipple AMM 1"NPT SuperDuplex will be: **90005 AS**

The reference required to place the order is **90005AS**.

Packaging

All TECVAL fittings are supplied packed in individual polyethylene airtight bags. Everything is 100% recyclable.



TECVAL S.L.
C/Berlin, 1 Nave 4
Pol.Can Torrella
08233-VACARISSES
Barcelona - SPAIN
Tel: +34 938 280 055
tecval@tecval.es